



GLOBAL ETS

NEXT GENERATION COMPONENT TESTING & AUTHENTICATION

Laboratory Analysis Report

Report Number: 1000-45552
Date: 2023-01-13
Customer: NOVUS T.D LTD
Customer PO Number: 1812202
Customer Internal P/N: NOT AVAILABLE
Manufacturer: ONSEMI
Manufacturer Part Number: ML4812CP
Quantity: 345
Date Code: H0330AB,H0340AB,H0320AB
Lot Code: NOT AVAILABLE
Part Description: PFC IC CRITICAL CONDUCTION (CRM) 16-PDIP



GB/T19001-2016/ISO9001:2015

Global ETS China

86-0755-829-11501

**301 Room B Section ZhiDa Industry Park
LongPinXi Road LongCheng Street
LongGang District
Shenzhen
China**

www.gets-china.com



Analysis Report - 1000-45552

Customer Name:	NOVUS T.D LTD	Purchase Order:	1812202
Part Number:	ML4812CP	Customer P/N:	NOT AVAILABLE
Manufacturer:	ONSEMI	Devices Received:	345
Date Code:	H0330AB,H0340AB,H0320AB	Lot Code:	NOT AVAILABLE

1.0.0	Summary Of Inspection Results
-------	-------------------------------

	Test-Process Operation	Quantity Inspected	Pass	Fail	N/A	Comments / Observations
1.1.0	GR1 Documentation and Packaging Inspection - Level A1 - All devices (SAE AS6081, 4.2.6.4.1) (Non-destructive) Test Temperature 23°C + /- 3°C					
1.1.1	Condition Observed	345	345	0		Total 345pcs was received in tube format. 166pcs of DCH0330AB 58pcs of DCH0340AB 121pcs of DCH0320AB
1.2.0	GV1 External Visual Inspection - Detailed - Level A2 - 122 Devices max (SAE AS6081, 4.2.6.4.2.2)(Non-destructive) Test Temperature 23°C + /- 3°C					
1.2.1	Condition Observed	30	0	30		10 sample from each D/C was visually inspected Secondary coating was observed. Devices are re-marked. Leads have been re-plated. Device's confirmed to be refurbished and failed external visual inspection.
1.3.0	GV1 Mechanical Inspection - 3 Devices (SAE AS6081)(Non-destructive) Test Temperature 23°C + /- 3°C					
1.3.1	Dimensions	3	3	0		Power Factor Correction Controller 0.8mA 16-Pin PDIP Rail

Prepared by:	Disclaimer	Generated On:
JAY XU	Global Electronics Testing Services, LLC China is dedicated to ensuring the highest standard of product testing in the industry and extend every effort to report reliable data and an accurate interpretation. However in no event shall Global Electronics Testing Services, LLC China be liable any special, indirect or consequential damages or any damages whatsoever resulting from loss of any kind including profits, in any action arising out of or in connection with the test report or data associated with the report.	Jan 13, 2023 16:55:34
Approved by:		Page:
PETER YAN	Global Electronics Testing Services LongGang District, Shenzhen China 86-0755-82911501	Page 2 Of 11



Analysis Report - 1000-45552

Customer Name:	NOVUS T.D LTD	Purchase Order:	1812202
Part Number:	ML4812CP	Customer P/N:	NOT AVAILABLE
Manufacturer:	ONSEMI	Devices Received:	345
Date Code:	H0330AB,H0340AB,H0320AB	Lot Code:	NOT AVAILABLE

2.0.0 Documentation and Packaging Inspection - Level A1 - All devices (SAE AS6081, 4.2.6.4.1) (Non-destructive)

Results Summary
Total 345pcs was received in tube format.

	Criteria	Acceptable	Suspect	Not Acceptable	N/A	Comments / Observations
2.1.0	Incoming Conditions					
2.1.1	ESD Protection	X				
2.1.2	Poor Syntax or Alterations				X	Manufacturer label is not available
2.1.3	Correct MSL Packaging				X	
2.1.4	Quantity Match Document	X				345pcs
2.1.5	Box Damaged				X	
2.1.6	Type of Package	X				Tube format

Images For Documentation and Packaging Inspection - Level A1 - All devices .



Figure 1. RECEIVED

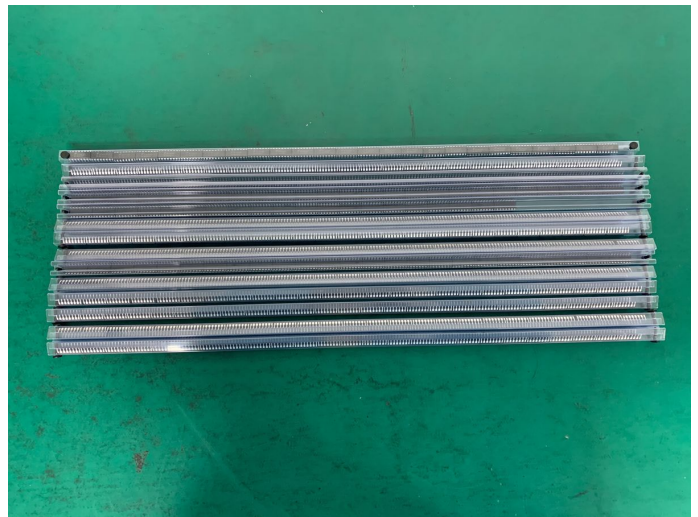


Figure 2. RECEIVED 1

Prepared by: JAY XU	Disclaimer Global Electronics Testing Services, LLC China is dedicated to ensuring the highest standard of product testing in the industry and extend every effort to report reliable data and an accurate interpretation. However in no event shall Global Electronics Testing Services, LLC China be liable any special, indirect or consequential damages or any damages whatsoever resulting from loss of any kind including profits, in any action arising out of or in connection with the test report or data associated with the report.	Generated On: Jan 13, 2023 16:55:34
Approved by: PETER YAN	Global Electronics Testing Services LongGang District, Shenzhen China 86-0755-82911501	Page: Page 3 Of 11



Analysis Report - 1000-45552

Customer Name:	NOVUS T.D LTD	Purchase Order:	1812202
Part Number:	ML4812CP	Customer P/N:	NOT AVAILABLE
Manufacturer:	ONSEMI	Devices Received:	345
Date Code:	H0330AB,H0340AB,H0320AB	Lot Code:	NOT AVAILABLE

3.0.0 External Visual Inspection - Detailed - Level A2 (SAE AS6081, 4.2.6.4.2.2) (Non-destructive)

	Criteria	Acceptable	Suspect	Not Acceptable	N/A	Comments / Observations
3.1.0	External Conditions					
3.1.1	Markings - Top			X		Secondary coating was observed
3.1.2	Pin 1 - Top			X		Secondary coating was observed
3.1.3	Construction Quality			X		Devices are not in new or original condition
3.2.0	Lead / BGA Conditions					
3.2.1	Lead Alignment			X		Used
3.2.2	Lead Formation / Scratches			X		Used
3.2.3	Lead Missing Pins	X				None were observed
3.2.4	Lead Plating Composition			X		Leads are re-plated
3.2.5	Lead Excessive or Uneven Plating			X		Leads are re-furbished
3.2.6	Lead Discoloration, Dirt or Residue			X		Leads are re-furbished
3.2.7	Lead Oxidation			X		Leads are re-furbished

Images For External Visual Inspection - Detailed - Level A2 .



Figure 3. H0330AB TOP

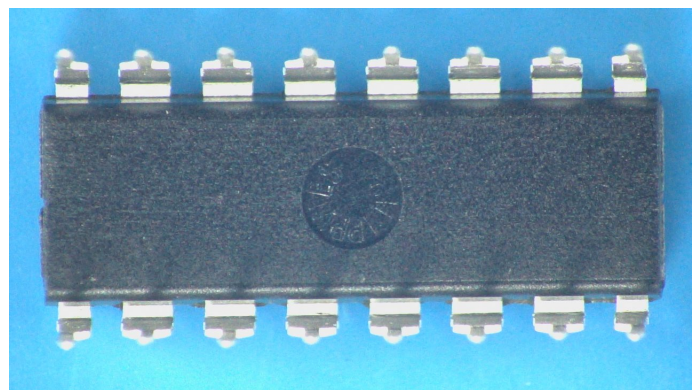


Figure 4. H0330AB BOTTOM

Prepared by: JAY XU	Disclaimer Global Electronics Testing Services, LLC China is dedicated to ensuring the highest standard of product testing in the industry and extend every effort to report reliable data and an accurate interpretation. However in no event shall Global Electronics Testing Services, LLC China be liable any special, indirect or consequential damages or any damages whatsoever resulting from loss of any kind including profits, in any action arising out of or in connection with the test report or data associated with the report.	Generated On: Jan 13, 2023 16:55:34
Approved by: PETER YAN	Global Electronics Testing Services LongGang District, Shenzhen China 86-0755-82911501	Page: Page 4 Of 11



Analysis Report - 1000-45552

Customer Name:	NOVUS T.D LTD	Purchase Order:	1812202
Part Number:	ML4812CP	Customer P/N:	NOT AVAILABLE
Manufacturer:	ONSEMI	Devices Received:	345
Date Code:	H0330AB,H0340AB,H0320AB	Lot Code:	NOT AVAILABLE



Figure 5. H0330AB BOTTOM PIN



Figure 6. H0330AB SIDE



Figure 7. H0330AB LEADS



Figure 8. H0330AB LEADS END

Prepared by:	JAY XU
Approved by:	PETER YAN

Disclaimer	
Global Electronics Testing Services, LLC China is dedicated to ensuring the highest standard of product testing in the industry and extend every effort to report reliable data and an accurate interpretation. However in no event shall Global Electronics Testing Services, LLC China be liable any special, indirect or consequential damages or any damages whatsoever resulting from loss of any kind including profits, in any action arising out of or in connection with the test report or data associated with the report.	
Global Electronics Testing Services LongGang District, Shenzhen China 86-0755-82911501	

Generated On:	Jan 13, 2023 16:55:34
Page:	Page 5 Of 11



Analysis Report - 1000-45552

Customer Name:	NOVUS T.D LTD	Purchase Order:	1812202
Part Number:	ML4812CP	Customer P/N:	NOT AVAILABLE
Manufacturer:	ONSEMI	Devices Received:	345
Date Code:	H0330AB,H0340AB,H0320AB	Lot Code:	NOT AVAILABLE

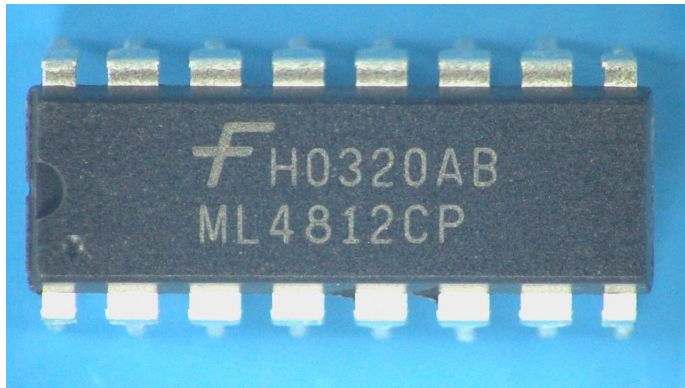


Figure 9. H0320AB TOP

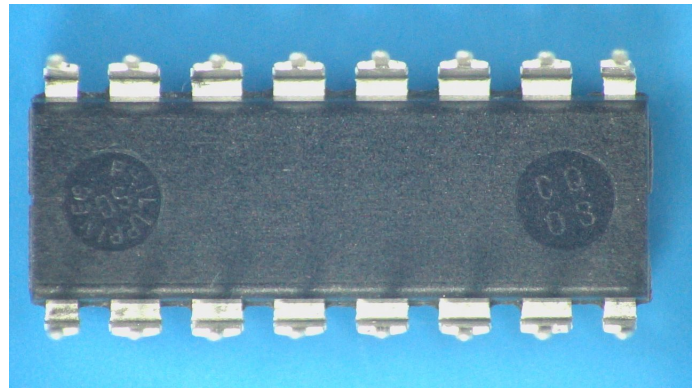


Figure 10. H0320AB BOTTOM

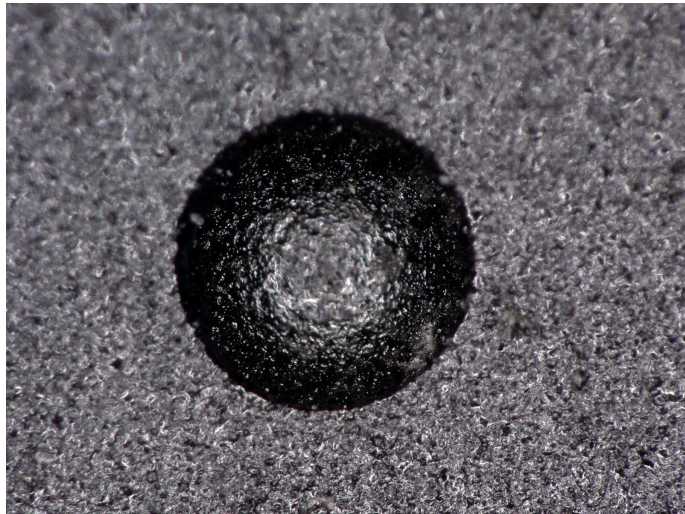


Figure 11. H0320AB TOP PIN



Figure 12. H0320AB BOTTOM PIN

Prepared by:	JAY XU
Approved by:	PETER YAN

Disclaimer	
Global Electronics Testing Services, LLC China is dedicated to ensuring the highest standard of product testing in the industry and extend every effort to report reliable data and an accurate interpretation. However in no event shall Global Electronics Testing Services, LLC China be liable any special, indirect or consequential damages or any damages whatsoever resulting from loss of any kind including profits, in any action arising out of or in connection with the test report or data associated with the report.	
Global Electronics Testing Services LongGang District, Shenzhen China 86-0755-82911501	

Generated On:	Jan 13, 2023 16:55:34
Page:	Page 6 Of 11



Analysis Report - 1000-45552

Customer Name:	NOVUS T.D LTD	Purchase Order:	1812202
Part Number:	ML4812CP	Customer P/N:	NOT AVAILABLE
Manufacturer:	ONSEMI	Devices Received:	345
Date Code:	H0330AB,H0340AB,H0320AB	Lot Code:	NOT AVAILABLE

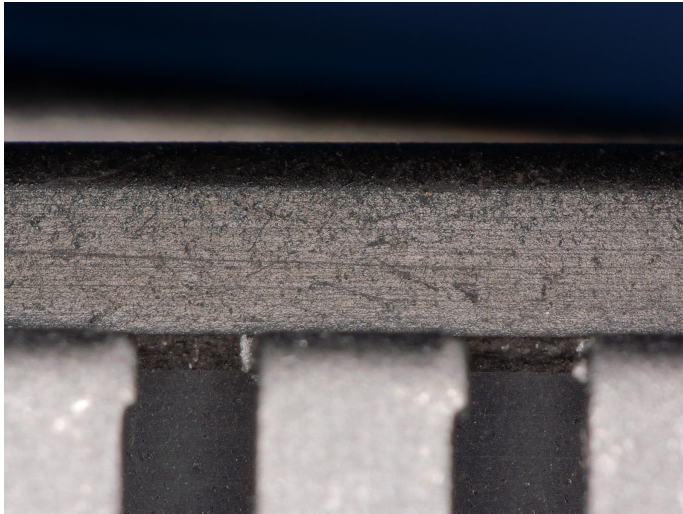


Figure 13. H0320AB SIDE



Figure 14. H0320AB LEADS

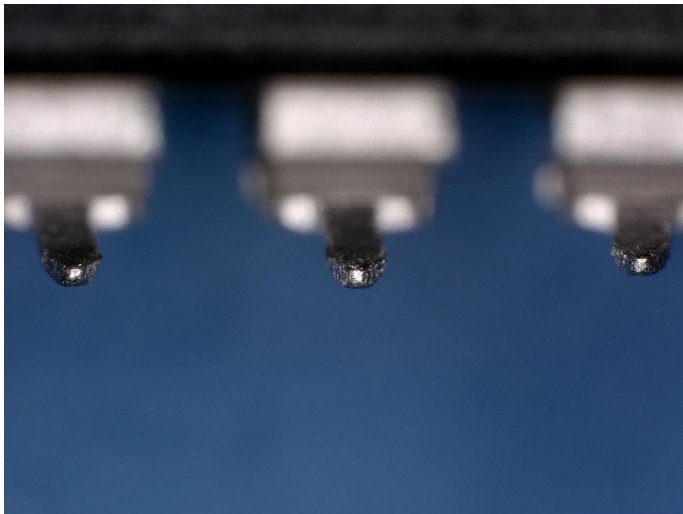


Figure 15. H0320AB LEADS END

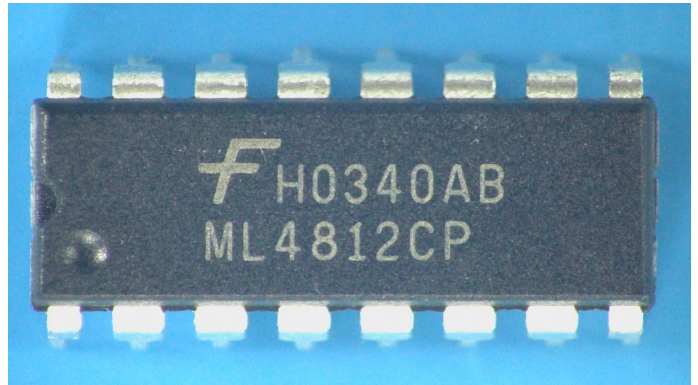


Figure 16. H0340AB TOP

Prepared by:
JAY XU
Approved by:
PETER YAN

Disclaimer
Global Electronics Testing Services, LLC China is dedicated to ensuring the highest standard of product testing in the industry and extend every effort to report reliable data and an accurate interpretation. However in no event shall Global Electronics Testing Services, LLC China be liable any special, indirect or consequential damages or any damages whatsoever resulting from loss of any kind including profits, in any action arising out of or in connection with the test report or data associated with the report.
Global Electronics Testing Services LongGang District, Shenzhen China 86-0755-82911501

Generated On:
Jan 13, 2023 16:55:34
Page:
Page 7 Of 11



Analysis Report - 1000-45552

Customer Name:	NOVUS T.D LTD	Purchase Order:	1812202
Part Number:	ML4812CP	Customer P/N:	NOT AVAILABLE
Manufacturer:	ONSEMI	Devices Received:	345
Date Code:	H0330AB,H0340AB,H0320AB	Lot Code:	NOT AVAILABLE

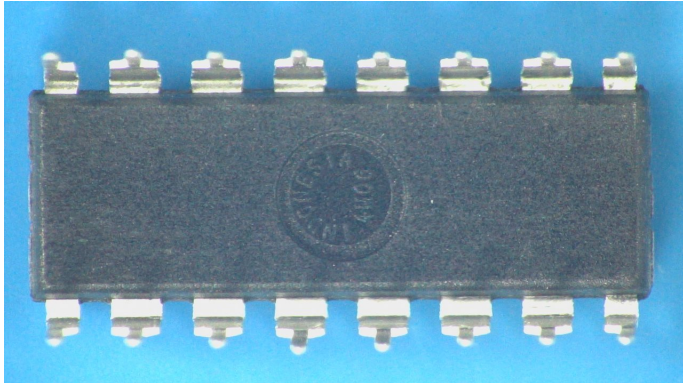


Figure 17. H0340AB BOTTOM

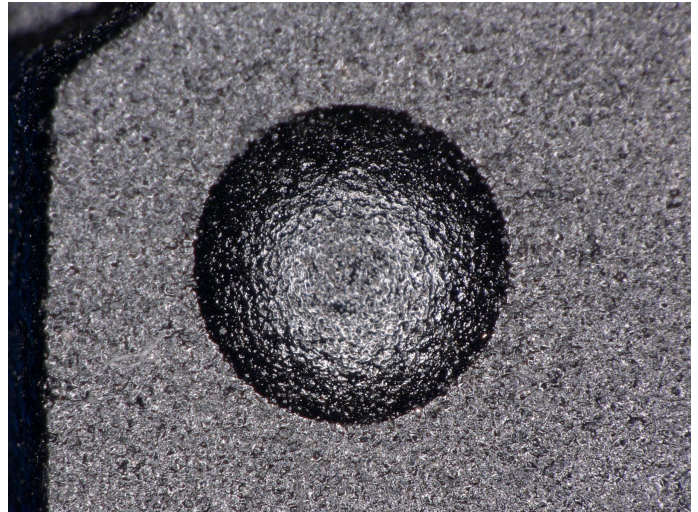


Figure 18. H0340AB TOP PIN



Figure 19. H0340AB BOTTOM PIN

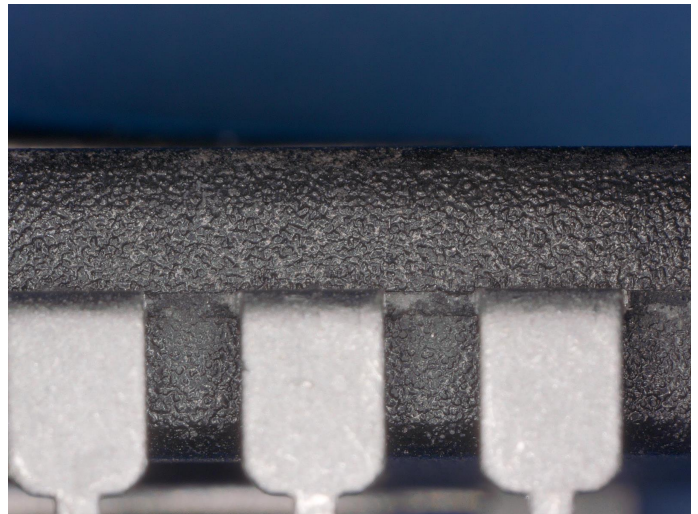


Figure 20. H0340AB SIDE

Prepared by: JAY XU	Disclaimer Global Electronics Testing Services, LLC China is dedicated to ensuring the highest standard of product testing in the industry and extend every effort to report reliable data and an accurate interpretation. However in no event shall Global Electronics Testing Services, LLC China be liable any special, indirect or consequential damages or any damages whatsoever resulting from loss of any kind including profits, in any action arising out of or in connection with the test report or data associated with the report.	Generated On: Jan 13, 2023 16:55:34
Approved by: PETER YAN	Global Electronics Testing Services LongGang District, Shenzhen China 86-0755-82911501	Page: Page 8 Of 11



Analysis Report - 1000-45552

Customer Name:	NOVUS T.D LTD	Purchase Order:	1812202
Part Number:	ML4812CP	Customer P/N:	NOT AVAILABLE
Manufacturer:	ONSEMI	Devices Received:	345
Date Code:	H0330AB,H0340AB,H0320AB	Lot Code:	NOT AVAILABLE



Figure 21. H0340AB LEADS

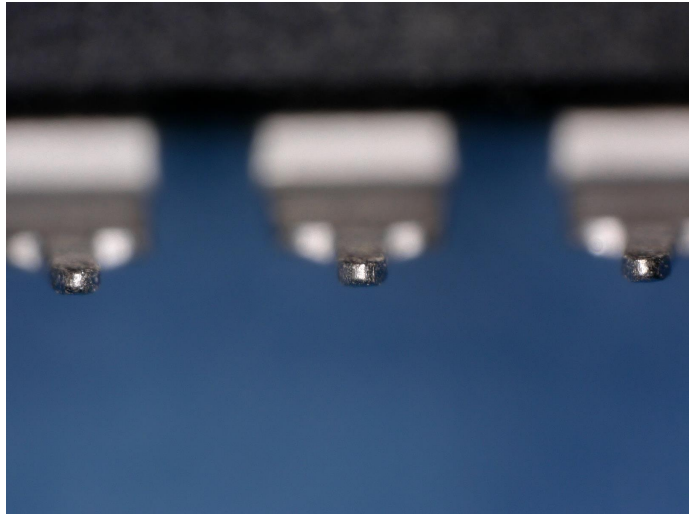


Figure 22. H0340AB LEADS END

Prepared by:
JAY XU
Approved by:
PETER YAN

Disclaimer
Global Electronics Testing Services, LLC China is dedicated to ensuring the highest standard of product testing in the industry and extend every effort to report reliable data and an accurate interpretation. However in no event shall Global Electronics Testing Services, LLC China be liable any special, indirect or consequential damages or any damages whatsoever resulting from loss of any kind including profits, in any action arising out of or in connection with the test report or data associated with the report.
Global Electronics Testing Services LongGang District, Shenzhen China 86-0755-82911501

Generated On:
Jan 13, 2023 16:55:34
Page:
Page 9 Of 11



Analysis Report - 1000-45552

Customer Name:	NOVUS T.D LTD	Purchase Order:	1812202
Part Number:	ML4812CP	Customer P/N:	NOT AVAILABLE
Manufacturer:	ONSEMI	Devices Received:	345
Date Code:	H0330AB,H0340AB,H0320AB	Lot Code:	NOT AVAILABLE

4.0.0 Mechanical Inspection (SAE A56081)(Non-destructive) Test Temperature 23°C +/- 3°C

Results Summary

Length =19.02/19.01/19.03 mm (18.79mm min - 19.31mm max) Pass
 Width =6.36/6.34/6.35 mm (6.09mm min -6.61 mm max) - Pass
 Thickness =3.28/3.25/3.26 mm (3.94 mm max) - Pass

	Criteria	Acceptable	Suspect	Not Acceptable	N/A	Comments / Observations
4.1.0	Package Dimensions					
4.1.1	Dimensions	X				

Images For Mechanical Inspection .

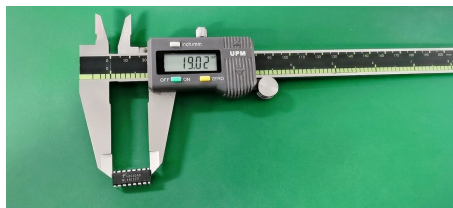


Figure 23. H0330AB LENGTH



Figure 24. H0330AB WIDTH



Figure 25. H0330AB THICKNESS



Figure 26. H0320AB LENGTH

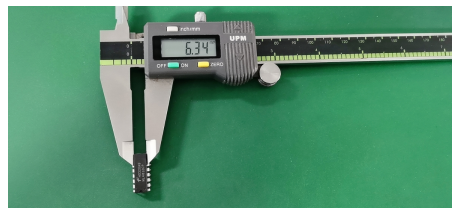


Figure 27. H0320AB WIDTH



Figure 28. H0320AB THICKNESS



Figure 29. H0340AB LENGTH



Figure 30. H0340AB WIDTH



Figure 31. H0340AB THICKNESS

Images For Mechanical Inspection . (Continued From Previous Page)

Prepared by: JAY XU	Disclaimer Global Electronics Testing Services, LLC China is dedicated to ensuring the highest standard of product testing in the industry and extend every effort to report reliable data and an accurate interpretation. However in no event shall Global Electronics Testing Services, LLC China be liable any special, indirect or consequential damages or any damages whatsoever resulting from loss of any kind including profits, in any action arising out of or in connection with the test report or data associated with the report.	Generated On: Jan 13, 2023 16:55:34
Approved by: PETER YAN	Global Electronics Testing Services LongGang District, Shenzhen China 86-0755-82911501	Page: Page 10 Of 11



Analysis Report - 1000-45552

Customer Name:	NOVUS T.D LTD	Purchase Order:	1812202
Part Number:	ML4812CP	Customer P/N:	NOT AVAILABLE
Manufacturer:	ONSEMI	Devices Received:	345
Date Code:	H0330AB,H0340AB,H0320AB	Lot Code:	NOT AVAILABLE

Package: P16 16-Pin PDIP

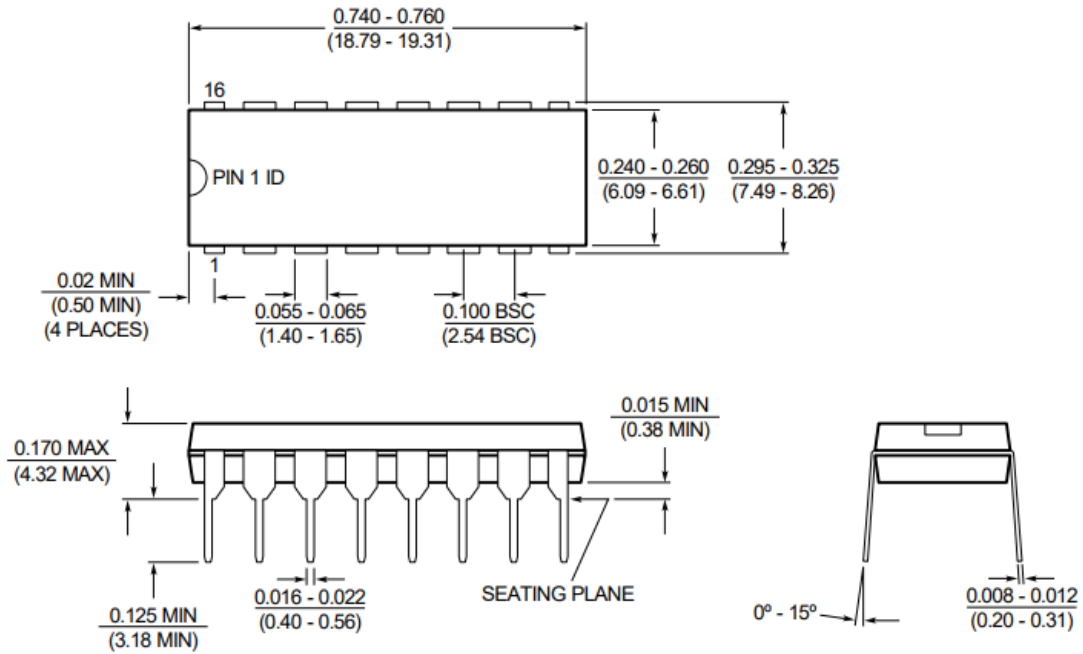


Figure 32. DIMENSION

Prepared by:
JAY XU

Approved by:
PETER YAN

Disclaimer

Global Electronics Testing Services, LLC China is dedicated to ensuring the highest standard of product testing in the industry and extend every effort to report reliable data and an accurate interpretation. However in no event shall Global Electronics Testing Services, LLC China be liable any special, indirect or consequential damages or any damages whatsoever resulting from loss of any kind including profits, in any action arising out of or in connection with the test report or data associated with the report.

Global Electronics Testing Services | LongGang District, Shenzhen China | 86-0755-82911501

Generated On:
Jan 13, 2023 16:55:34

Page:
Page 11 Of 11